

## Installing Summit Event Manager – Pro for Access 2003

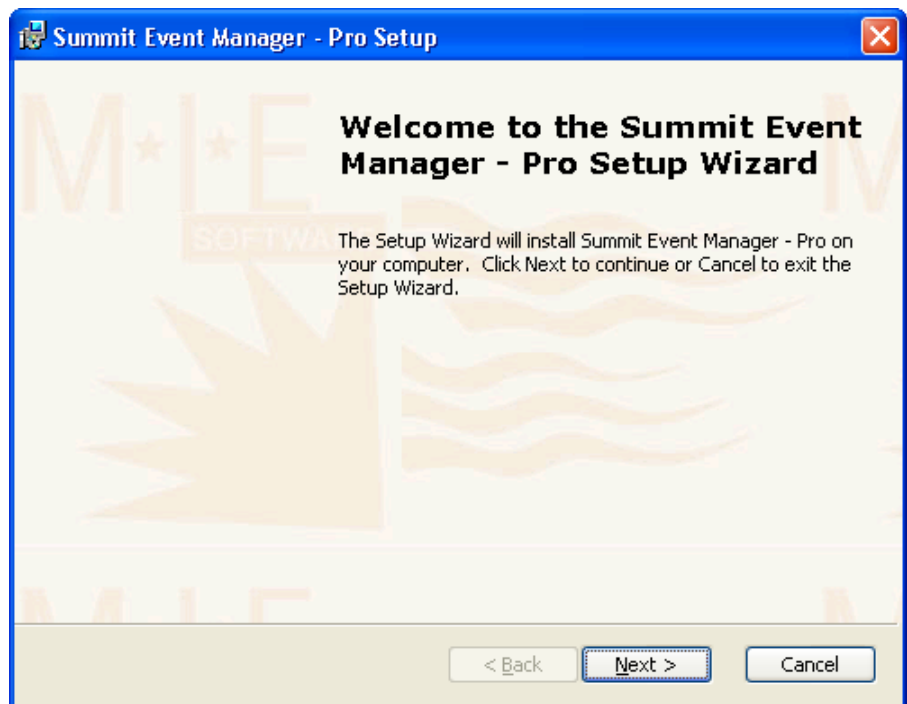
To install Summit from the web, take the following steps. Be sure to close down any applications you might have running (don't forget any you may have minimised).

When you select the SEMP2003.exe to download, the dialog box to the right will display. Select the *Setup* button or just press *Enter*.

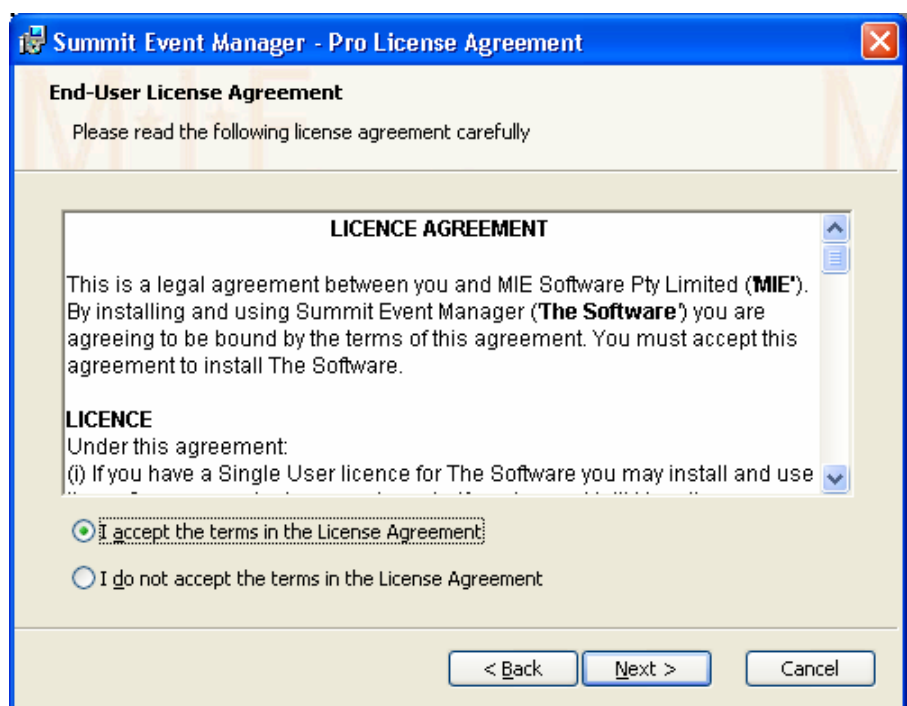


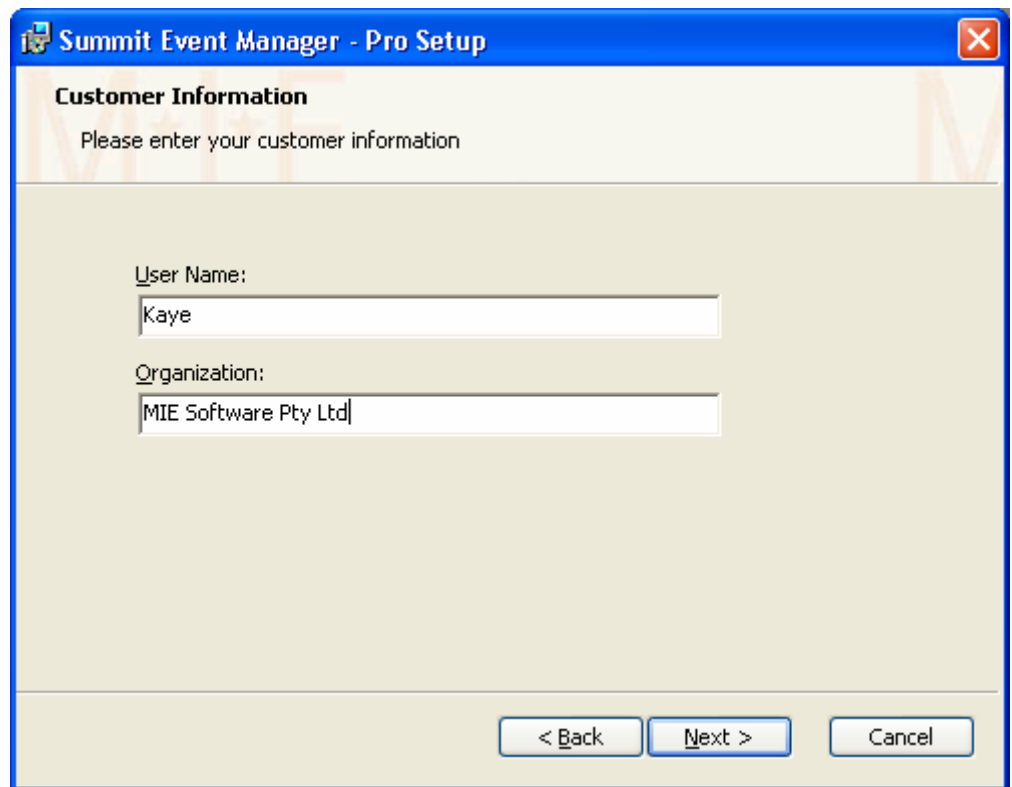
The Setup program will display the dialog box to the right.

Once you've checked that this is the only program running, select the *Next* button.

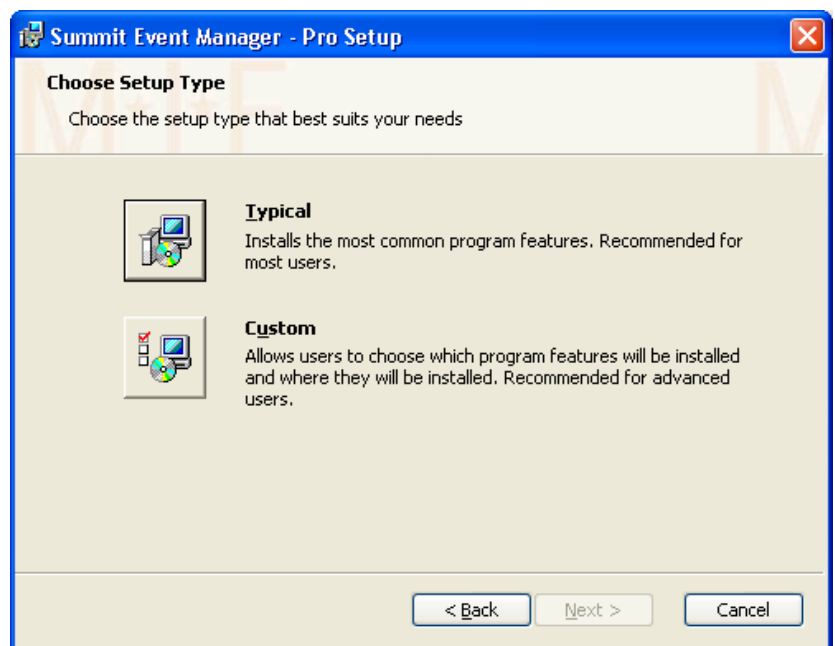


In order to proceed, you must accept the End-User Licence Agreement. If you don't accept, the setup process will terminate.





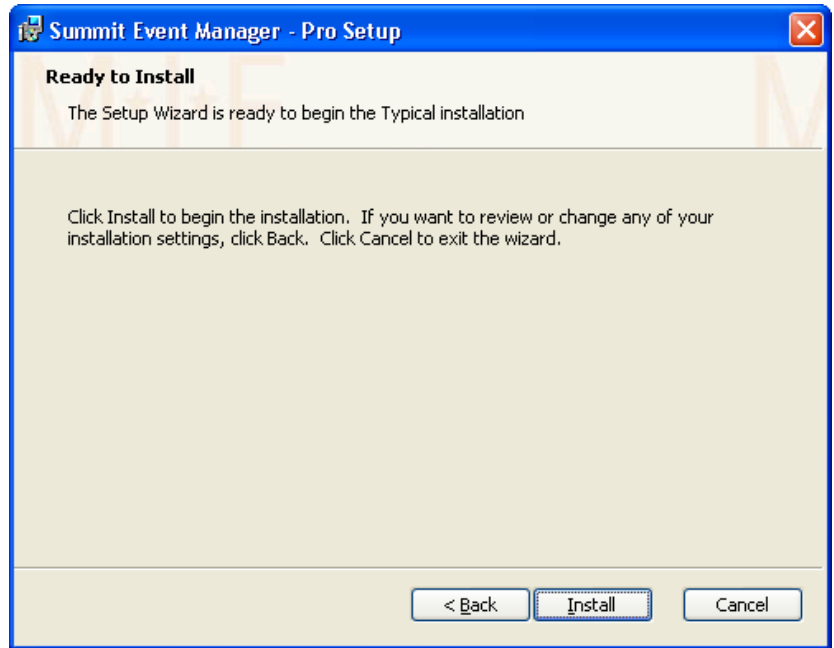
Enter your User Name and Organisation.



Always select the Typical installation, unless you have very clear and specific idea of exactly which components of Access you want installed.

Click on the large button to the left of the word Typical.

Click on the Install button to commence the installation process.



The time taken by your computer to install the software is dependent upon its processing power.

The process will end by stating that the installation was successful

